

SEKOL

Lead the World...

Collection of
**PORCELAIN GLAZED
VITRIFIED TILES**

600 x 1200mm



SURFACE

● GLOSSY

● MATT

● HIGH GLOSS

● SATIN

● ROCKER

● DECORE



CHARACTER IDENTIFICATION



Floor Application



Wall Application



Rectified



Position



Glossy



Semi Polished



Matt



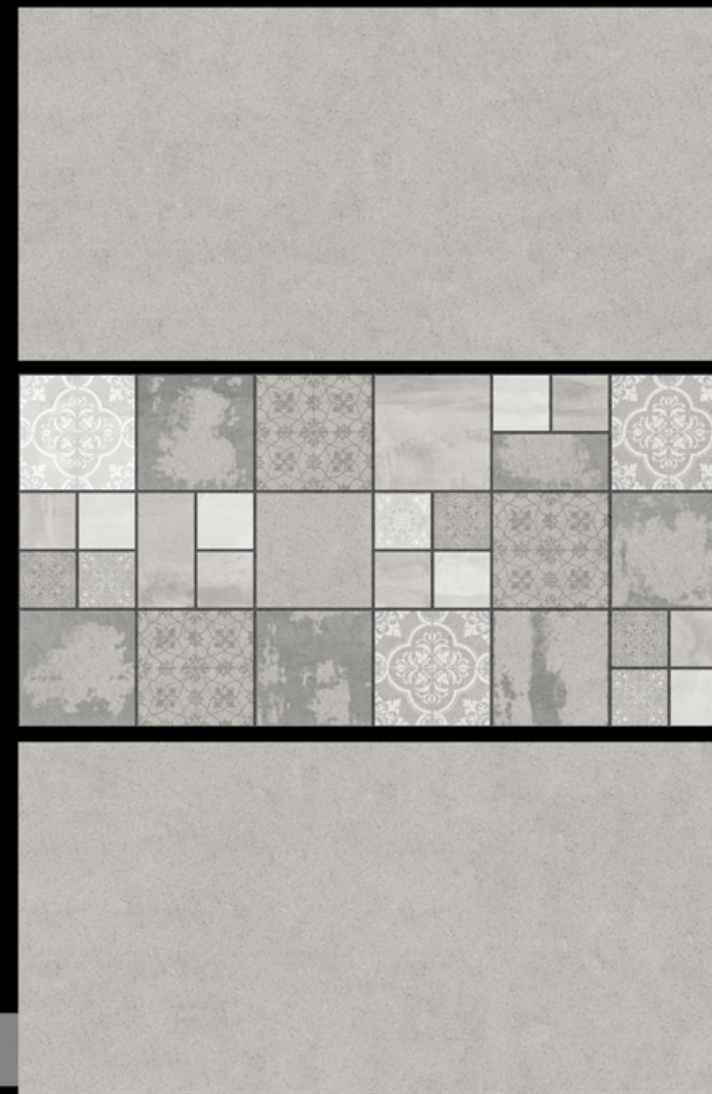
No. of variation in Pattern

USER GUIDE

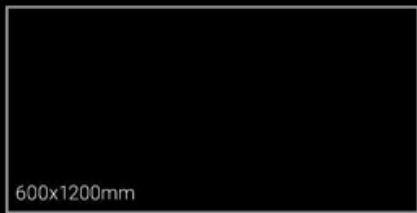
600x1200mm

300x600mm

600x600mm



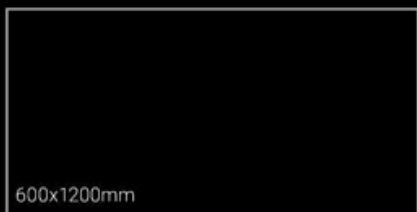
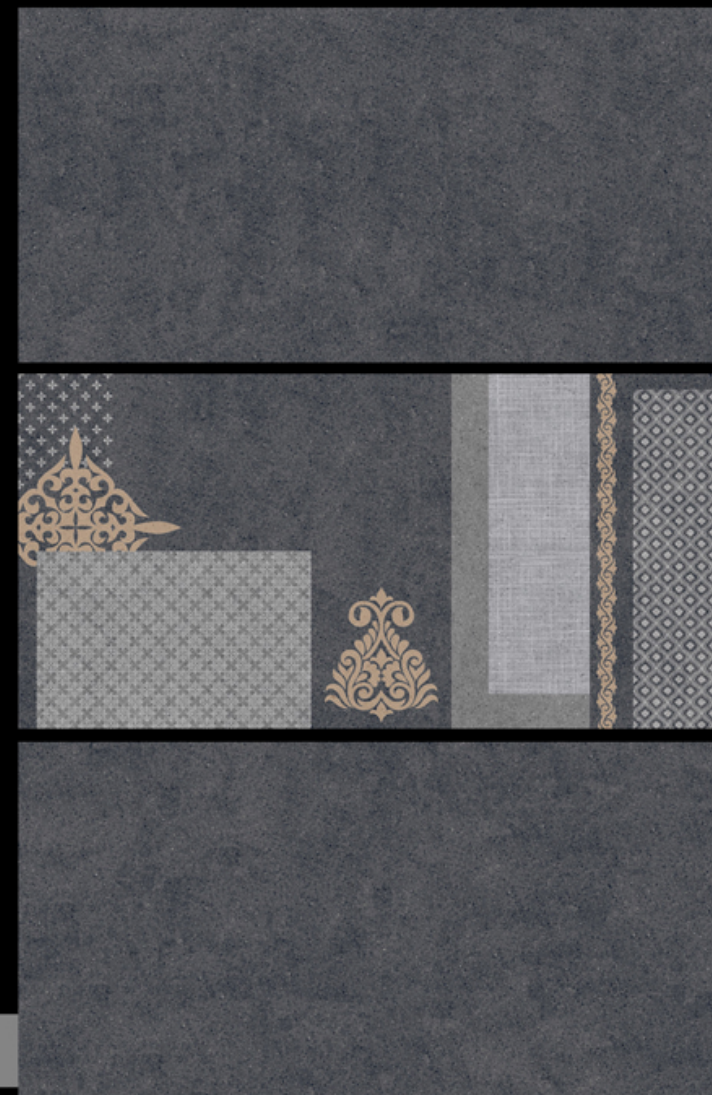
8001



Decor
8001
Rocker

Base
8001
Rocker

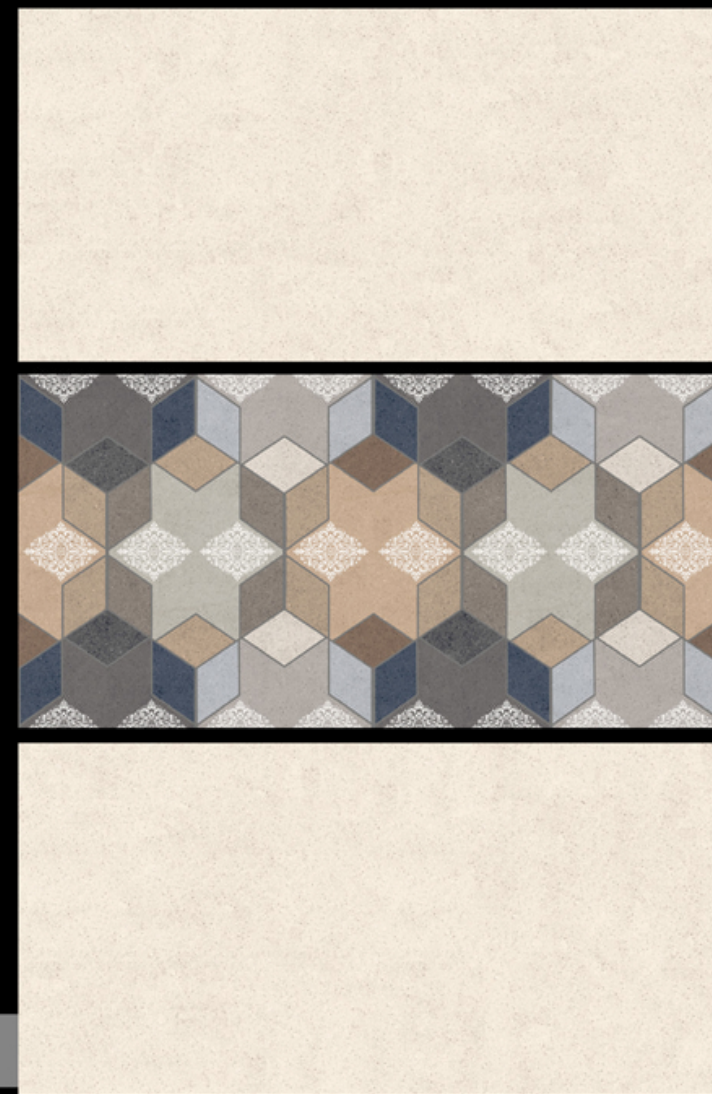
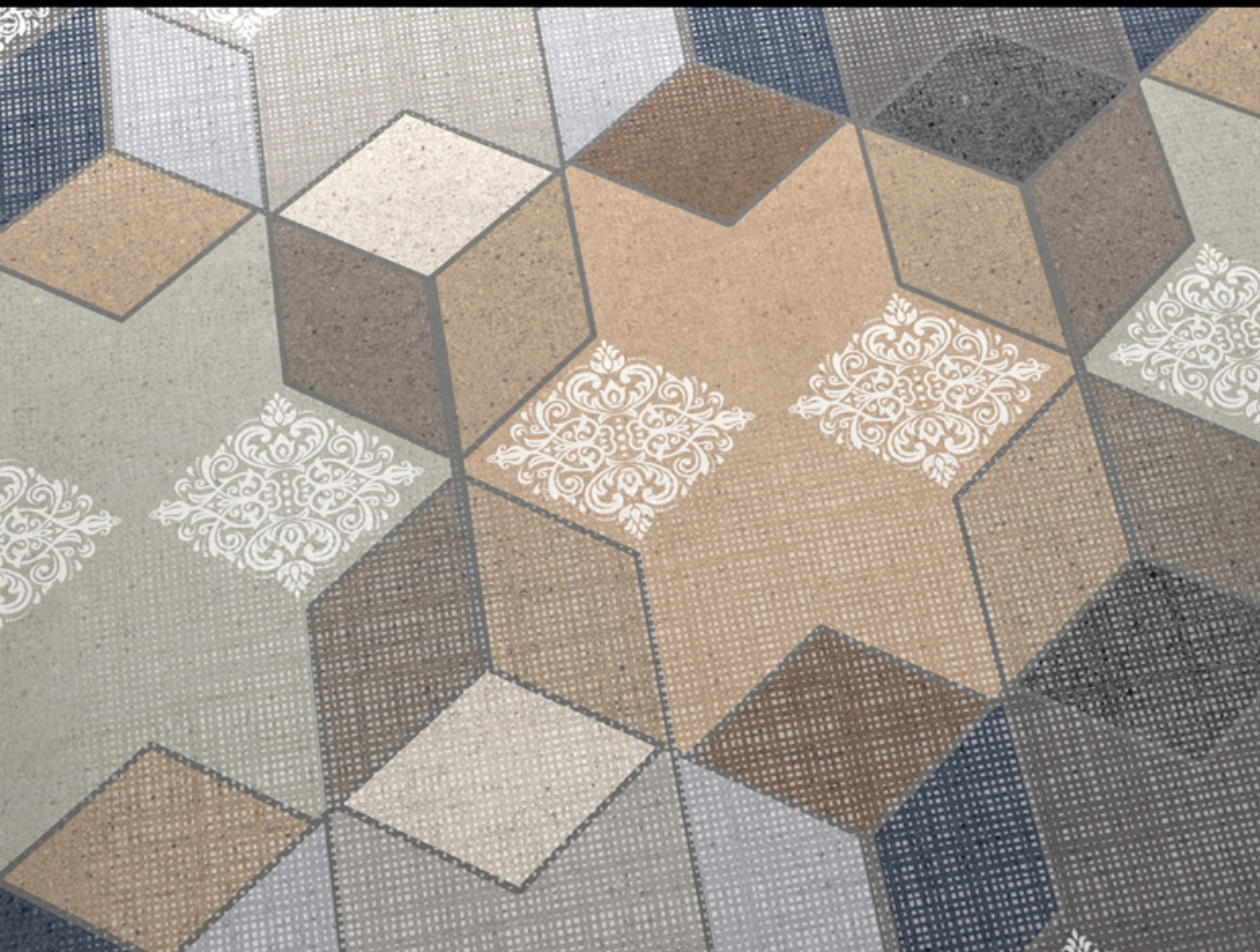




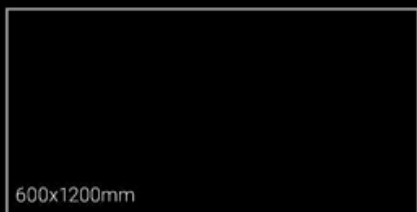
Decor
8002
Rocker

Base
8002
Rocker





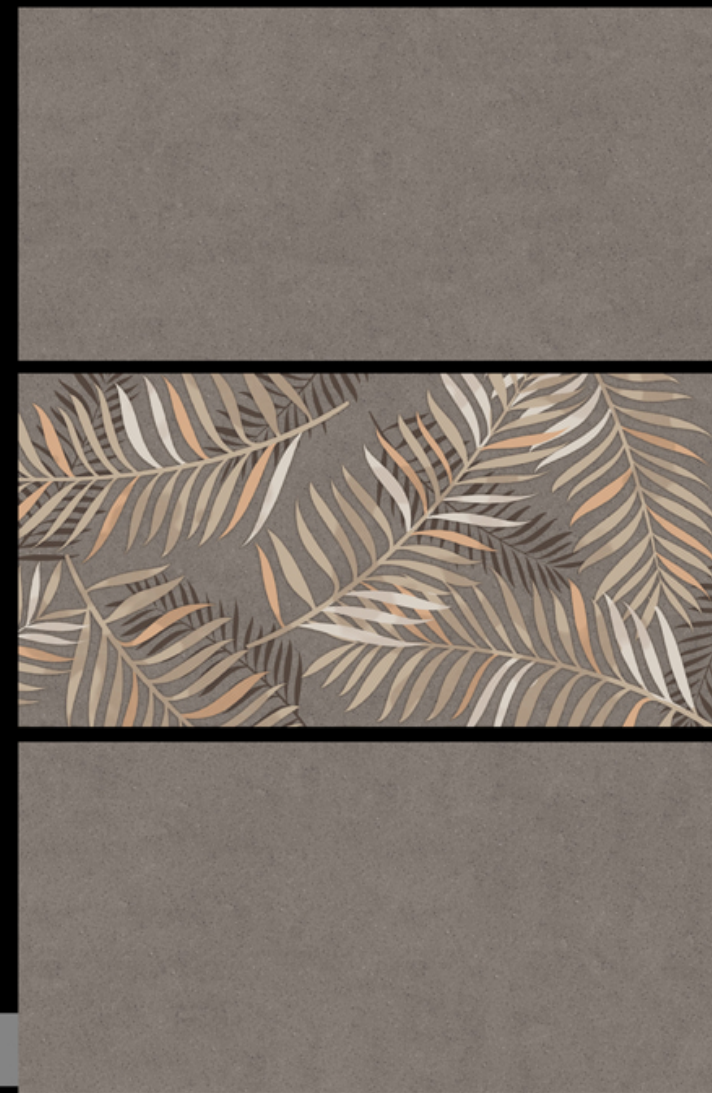
8003



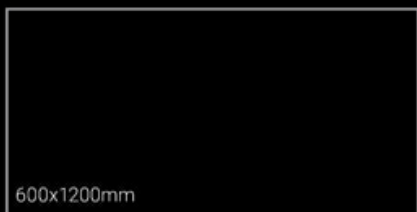
Decor
8003
Rocker

Base
8003
Rocker





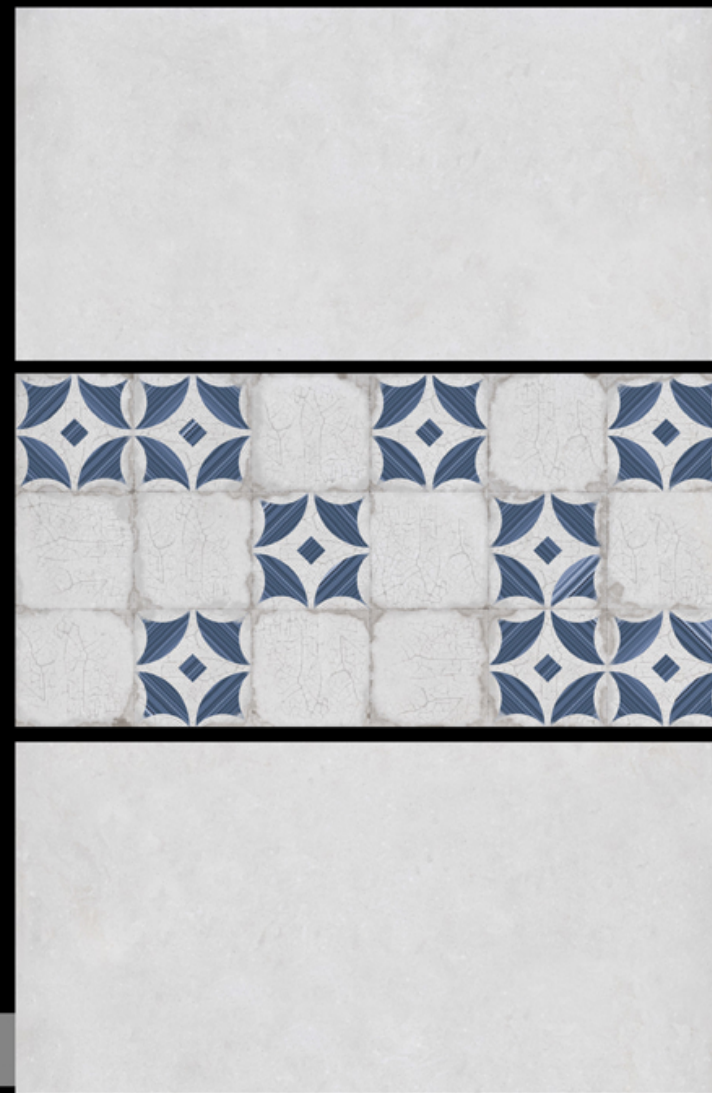
8004



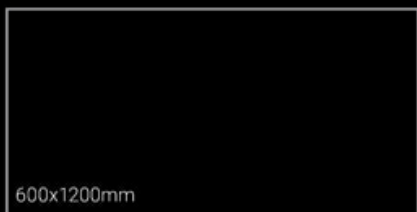
Decor
8004
Rocker

Base
8004
Rocker





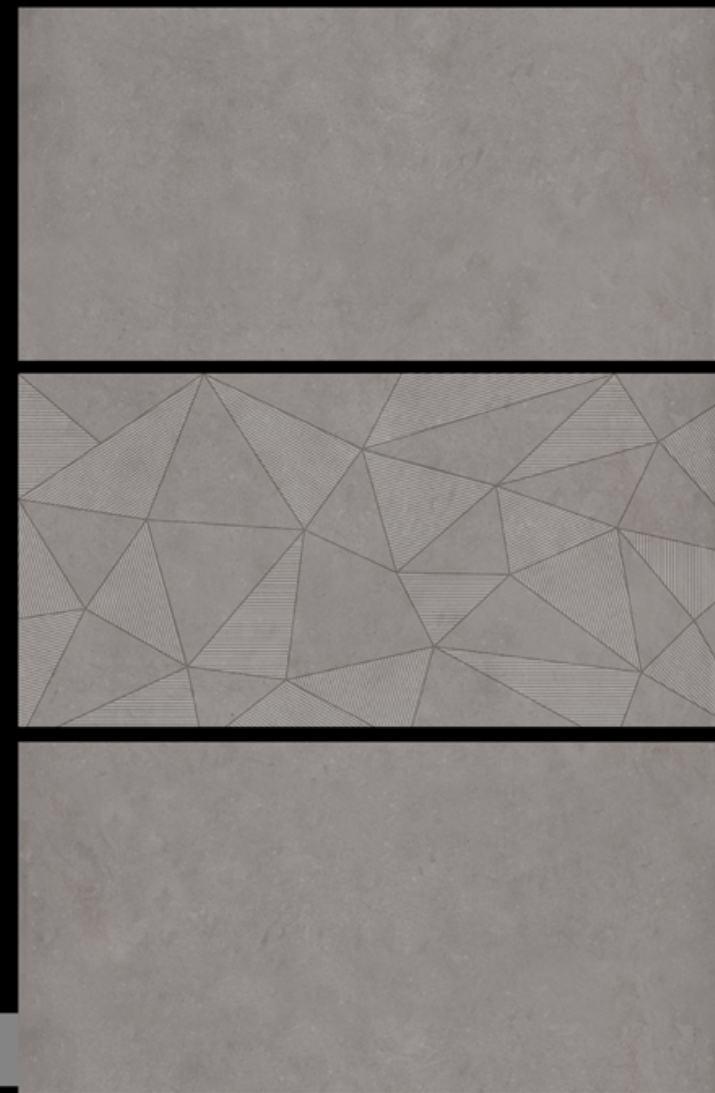
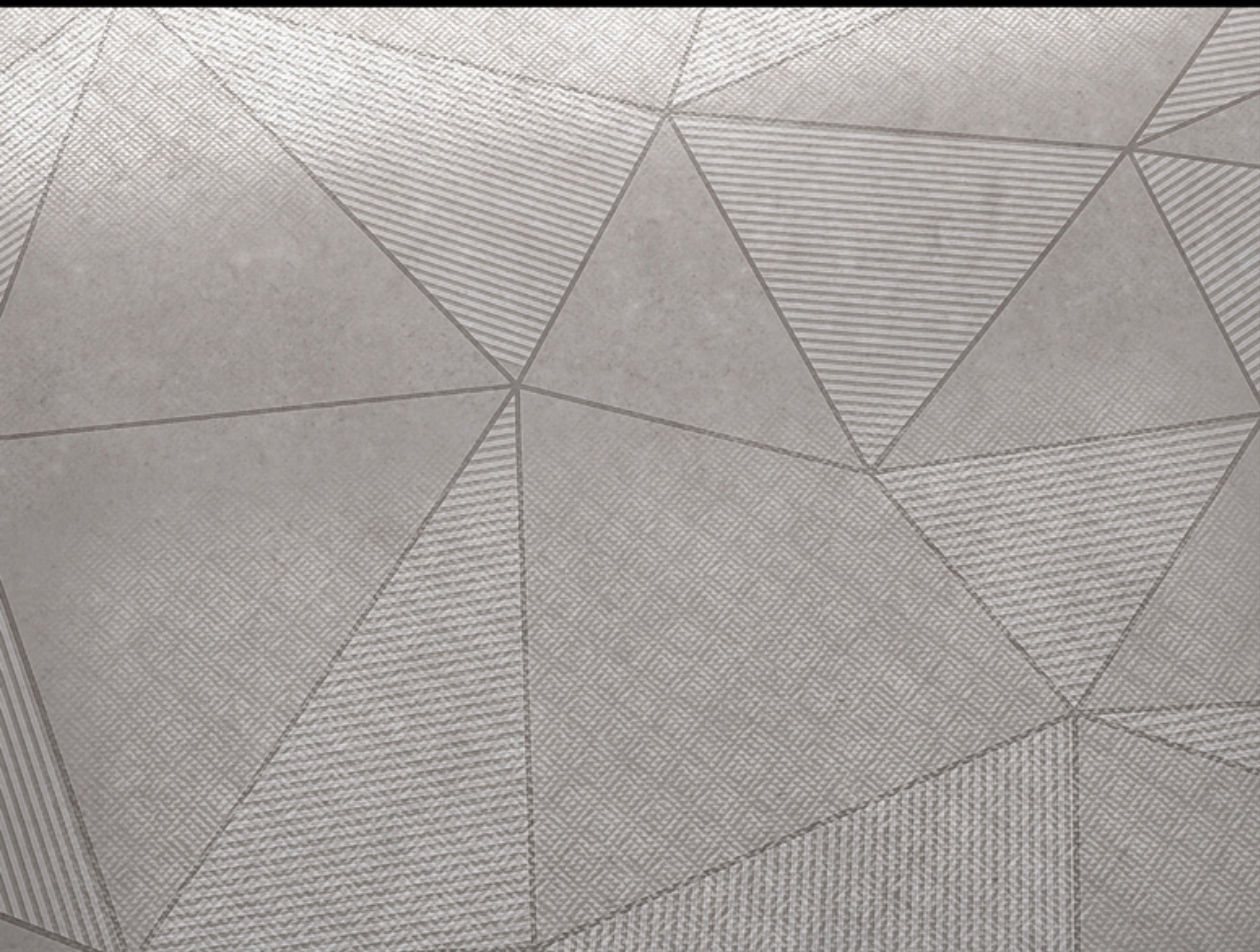
8005



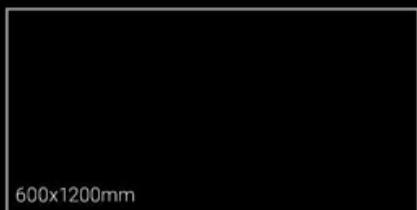
Decor
8005
Rocker

Base
8005
Rocker





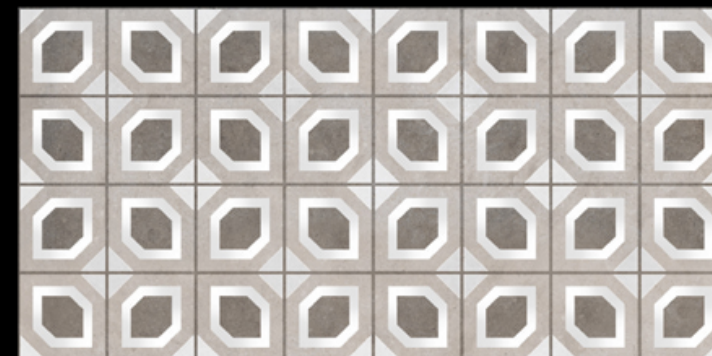
8006



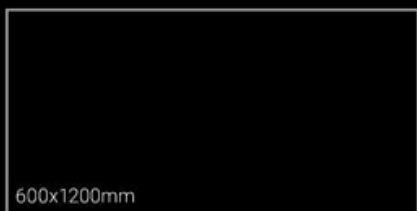
Decor
8006
Rocker

Base
8006
Rocker





8007



600x1200mm

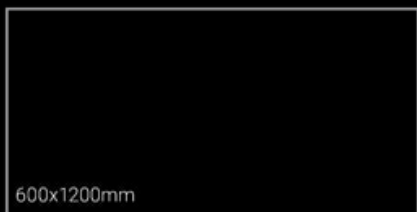
Decor
8007
Rocker

Base
8007
Rocker





8008



Decor
8008
Rocker

Base
8008
Rocker





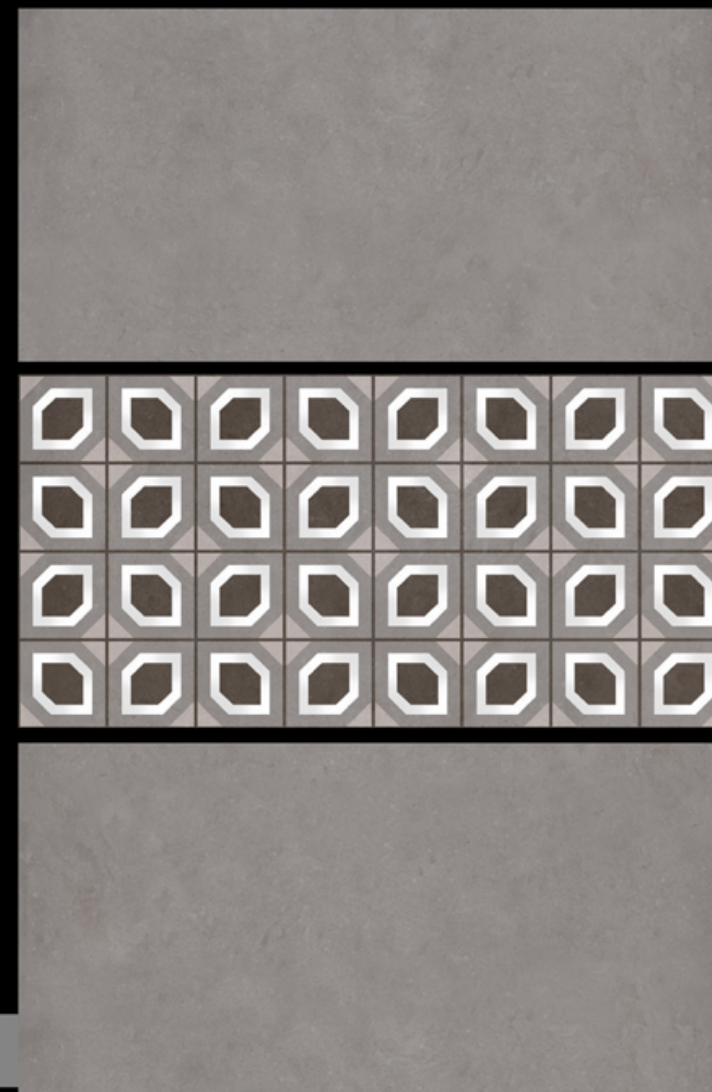
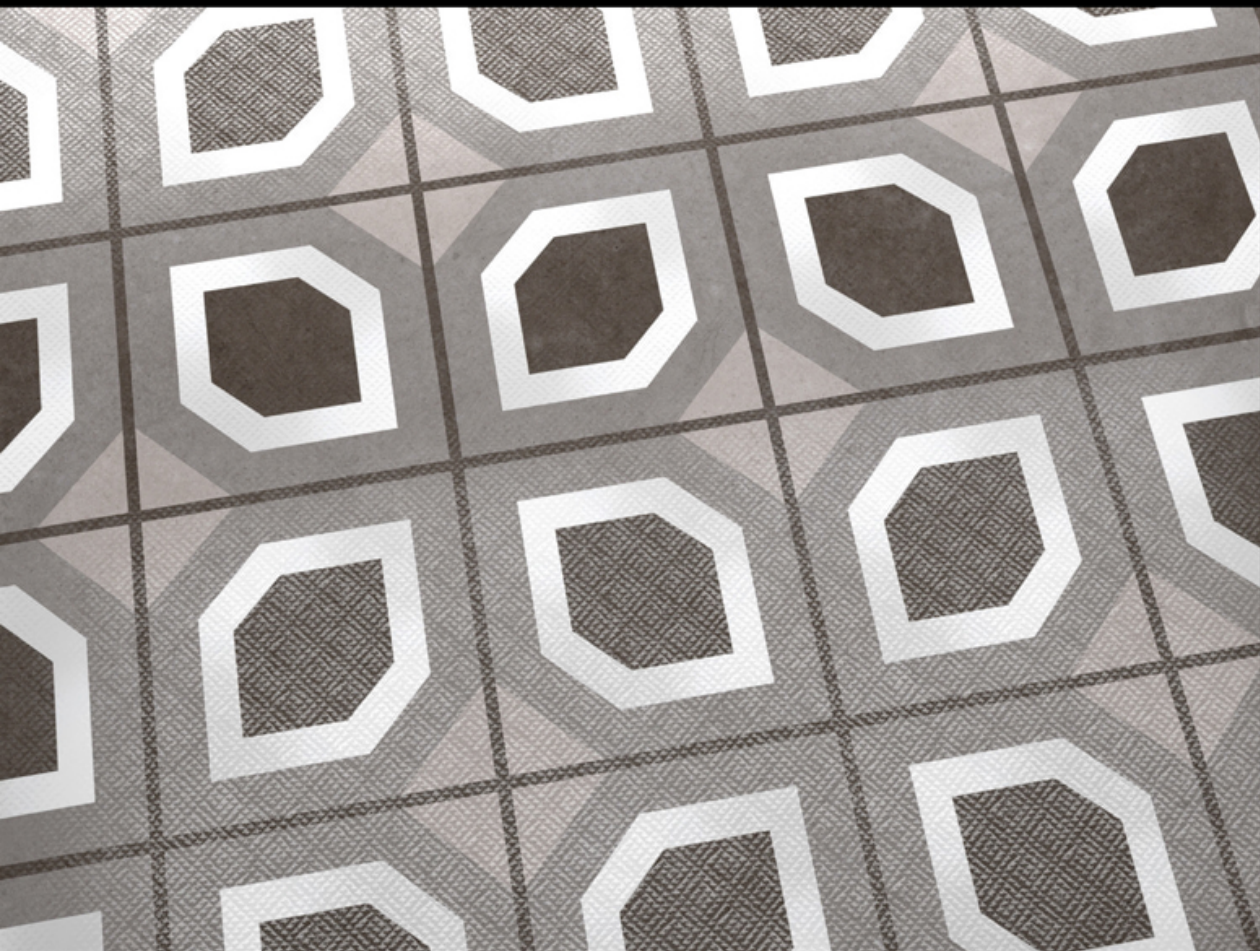
8009

Decor
8009
Rocker

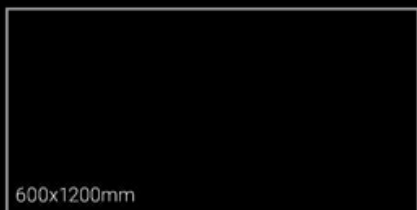
Base
8009
Rocker

600x1200mm





8010



600x1200mm

Decor
8010
Rocker

Base
8010
Rocker



TECHNICAL SPECIFICATION



PROPERTIES	TEST EN: 14411 : 2016 (GROUP BLA.) ANNEX - G STANDARD AS PER ISO 13006 : 2018	MARBILANO RESULT	TESTING METHOD
Dimension and Surface Quality			
Deviation in Length	± 1 mm	0.00 - 0.10mm	EN ISO 10545 - 2
Deviation in Width	± 1 mm	0.00 - 0.10mm	EN ISO 10545 - 2
Deviation in Thickness	± 0.5mm	0.00 - 0.18mm	EN ISO 10545 - 2
Straightness of Sides	± 0.8mm	0.12 - 0.14mm	EN ISO 10545 - 2
Rectangularity	± 0.8mm	0.14 - 0.16mm	EN ISO 10545 - 2
Surface Flatness	± 1.8mm	0.00 - 0.15mm	EN ISO 10545 - 2
Surface quality	95%	100% free from defects	EN ISO 10545 - 2
Physical Property			
Water Absorption %	≤ 0.500%	0.020%	EN ISO 10545 - 3
Breaking Strength N	≥ 1300	2255.52N	EN ISO 10545 - 4
Modulus of Rupture (MOR) N/mm ²	35	50.34N/mm ²	EN ISO 10545 - 4
Resistance to surface abrasion		PEI Class - IV 2100 Revolution pass	EN ISO 10545 - 7
Coefficient of Linear Thermal Expansion	9 x 10 ⁻⁶ Max	5.23 x 10 ⁻⁶	EN ISO 10545 - 8
Thermal Shock Resistance	10 cycle Min	confirm	EN ISO 10545 - 9
Crazing Resistance	No crazin in two cycle	confirm	EN ISO 10545 - 11
Moisture Expansion (mm/mm)	0.02 mm/m Max.	0.00 mm/m Max.	EN ISO 10545 - 10
Impact Resistance	0.55 Min.	0.58	EN ISO 10545 - 5
Scrach hardness of Surface (mohs scale)	5 moh's scal	5 moh's	IS 13630 - 13
Bulk density (g/cc)	2.2 Min.	2.2913 g/cc	EN ISO 10545 - 3
Chemical Property			
Resistance Stain	Min Class - 3	Min Class - 5	EN ISO 10545 - 14
Resistance to Low Concentration of Acid & Alkali	Min Class - GLC	Class - GLA	EN ISO 10545 - 13
Resistance to High Concentration of Acid & Alkali	Min Class - GHC	Class - GHA	EN ISO 10545 - 13
Resistance to house chemical	Min Class - GC	Class - GA	EN ISO 10545 - 13
Resistance to swimming pool salt	Min Class - GC	Class - GA	EN ISO 10545 - 13
Lead and Cadium Release	≤0.1 mg/dm ²	0.00 mg/dm ²	EN ISO 10545 - 15

SEKOL

Lead the World...



8-A National Highway , Sartanpar Road,
Sartanpar, Behind Slim Tiles Pvt Ltd,
Morbi, Gujarat, 363642, India.

 www.sekoltiles.com
 sekoltiles@gmail.com

+91 97264 18181
+91 97264 18189